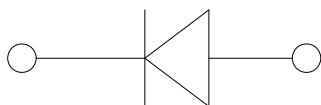
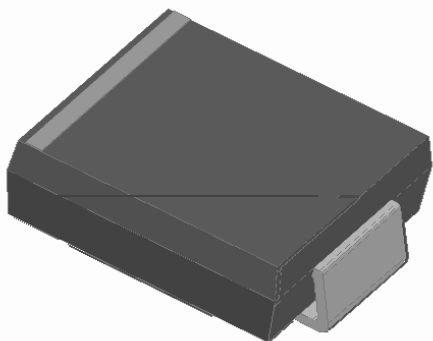


; F)5'H<F I ; F)A



Hmd]WU` 5dd`]WUh]cbg`

For use in high frequency rectification of power supplies, inverters, converters, and freewheeling diodes for consumer, and telecommunication.

AYW\Ub]WU` 8UhU`

Package: DO-214AB (SMC)

Molding compound meets UL 94 V-0 flammability rating, RoHS-compliant, halogen-free

Terminals: Tin plated leads, solderable per J-STD-002 and JESD22-B102

Mea M- unless otherwise specified

D5F5A9H9F`	GMA6C@	IB-H`	; F)5
------------	--------	-------	-------

AUI]a i a`FAG`Jc`hU[Y`	J	J`)`	+\$`	%(\$`	&,\$`	(&\$`)*\$`	+\$ \$`
AUI]a i a`87`V`cW_]b[`Jc`	J	J`)\$`	%%\$ \$`	&\$ \$`	(\$ \$`	**\$ \$`	, \$ \$`	%%\$ \$ \$`
5 jYfU[Y`FYWh]Z]YX`C`ihd`ih` 4 *\$<n`g]bY`kUjY`Z`FYg]` :cfkUfX`Gif[Y`7`iffYbh`flB` Yh]h]jYt`	5`	A)\$`			
@ 1ms, square wave, 1 cycle, Tj=25							120		
Current squared time	I ² t	A ² s					200		
@ 1ms t 8.3ms Tj=25							60		
Junction Temperature	Tj								-55 ~ +150

9`YWhf]WU` 7`UfUWhYf]gh]Wg` (Ta=25 Unless otherwise specified)

D5F5A9H9F`	GMA6C@	IB-H`	H9GH`7CB8-H-CBG`	; F)5	; F)6	; F)8	; F);	; F)>	; F)?	; F)A
Maximum instantaneous forward voltage	V _F	V	IFM=5.0A	1.3						
Maximum reverse recovery time	t _r	ns	I _F =0.5A, I _R =1.0A, I _R =0.25A	150			250	500		
Maximum DC reverse current at rated DC blocking voltage	I _R	μA	T _j =25	5						
			T _j =125	100						
Typical junction capacitance	C _j	pF	Measured at 1MHz and Applied Reverse Voltage of 4.0 V.D.C	57			39	31		



Typical Thermal Resistance (Ta=25 Unless otherwise specified)

Part Number	Package	Lead Type	Mounting	Case	Lead	Lead	Lead	Lead	Lead
Typical Thermal Resistance	R J-A(1)	/W		48					
	R J-L(1)			15					
	R J-C(1)			12					

Note (1)

Thermal resistance from junction to ambient and from junction to lead mounted on P.C.B. with 0.6" x 0.6" (16 mm x 16 mm) copper pad areas

Example

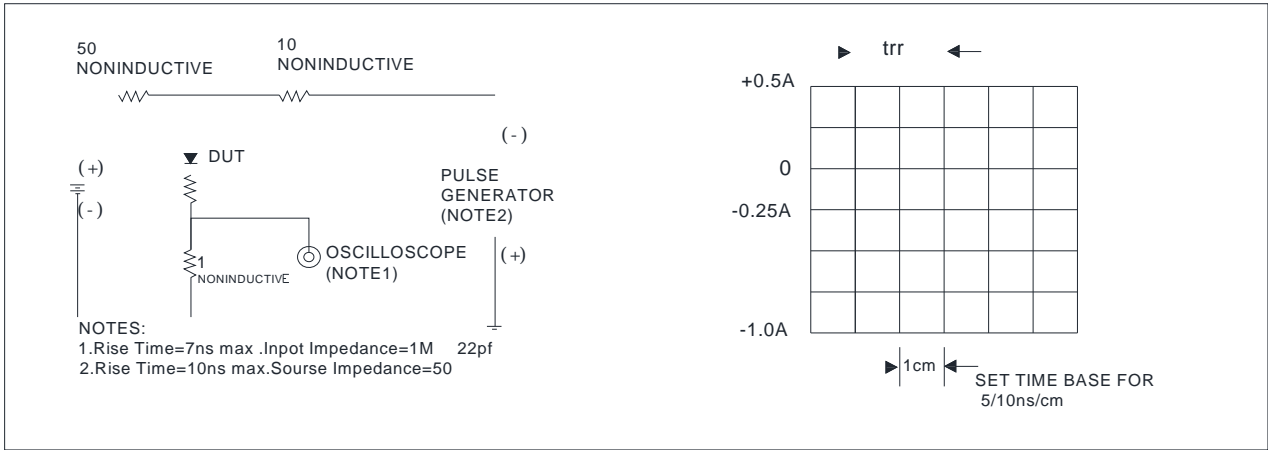
Part Number	Package	Lead Type	Mounting	Case	Lead	Lead
GR5A~GR5M	F1	Approximate 0.254	3000	/	42000	13" reel

Typical

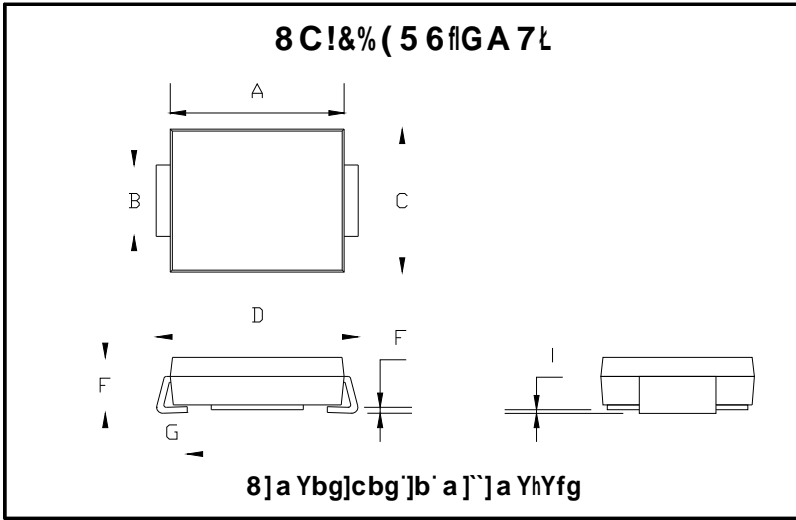


DO-214AB (SMC)

DO-214AB (SMC) Test Circuit and Waveform

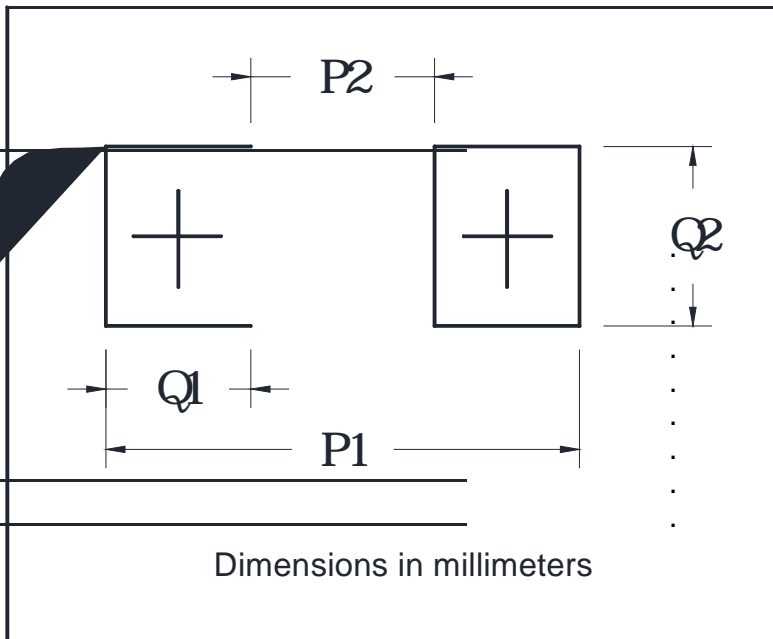


DO-214AB (SMC) Dimensions



DO-214AB (SMC)		
Dim	Min	Max
A	6.60	7.11
B	2.85	3.27
C	5.59	6.22
D	7.75	8.13
E	1.99	2.61
F	0.15	0.31
G	0.76	1.52
H	0.05	0.20

DO-214AB (SMC) Dimensions (mm)



DO-214AB (SMC)	
Dim	Min
P1	9.9
P2	3.84
Q1	3.03
Q2	3.82



8]gW'U]a Yf'

The information presented in this document is for reference only. Yangzhou Yangjie Electronic Technology Co., Ltd. reserves the right to make changes without notice for the specification of the products displayed herein to improve reliability, function or design or otherwise.

The product listed herein is designed to be used with ordinary electronic equipment or devices, and not designed to be used with equipment or devices which require high level of reliability and the malfunction of which would directly endanger human life (such as medical instruments, transportation equipment, aerospace machinery, nuclear-reactor controllers, fuel controllers and other safety devices), Yangjie or anyone on its behalf, assumes no responsibility or liability for any damages resulting from such improper use of sale.

This publication supersedes & replaces all information previously supplied. For additional information, please visit our website [http:// www.21yangjie.com](http://www.21yangjie.com) , or consult your nearest Yangjie's sales office for further assistance.